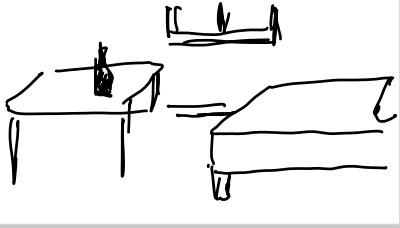


Scene No. Shot No.



1st room - normal
JAZZ SONG Playing

Scene No. Shot No.



Drink water
Pass out

Scene No. Shot No.

Fade to
Black

Scene No. Shot No.



creepy soundtrack
1st room -> night mare
version

Scene No. Shot No.



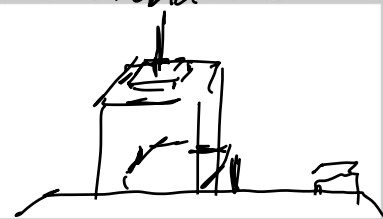
Walk out the
door

Scene No. Shot No.

Fade to
Black

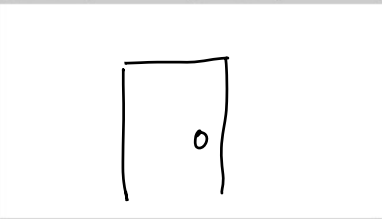
Game Begins

Scene No. Shot No. Phobia 1



Phobia 1 -> Fear of
heights
SKYSCRAPERS

Scene No. Shot No.



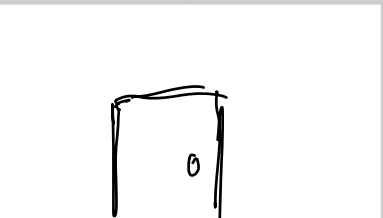
Door to Level 2

Scene No. Shot No. Phobia 2



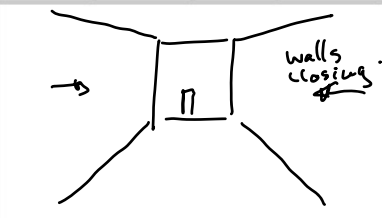
Phobia 2 -> Fear of clouds
scene -> abandoned
amusement park

Scene No. Shot No.



Door to level 3

Scene No. Shot No.



Phobia 3 -> claustrophobia
scene -> long corridor

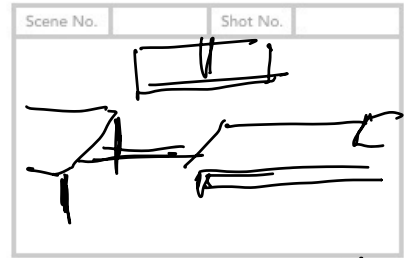
Scene No. Shot No.



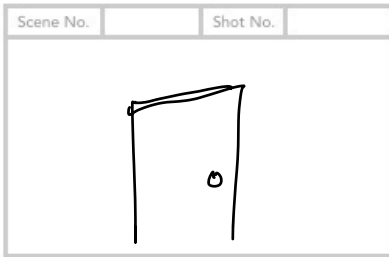
Final door

Scene No.	Shot No.
something happens (surprise)	

Scene No.	Shot No.
Fade to Black	



wake up in the
first room
but something is
weird



walk out the
room

Scene No.	Shot No.
Credits	

